

The ABCD Study: Your Experience During the COVID-19 Pandemic



Adolescent Brain Cognitive Development

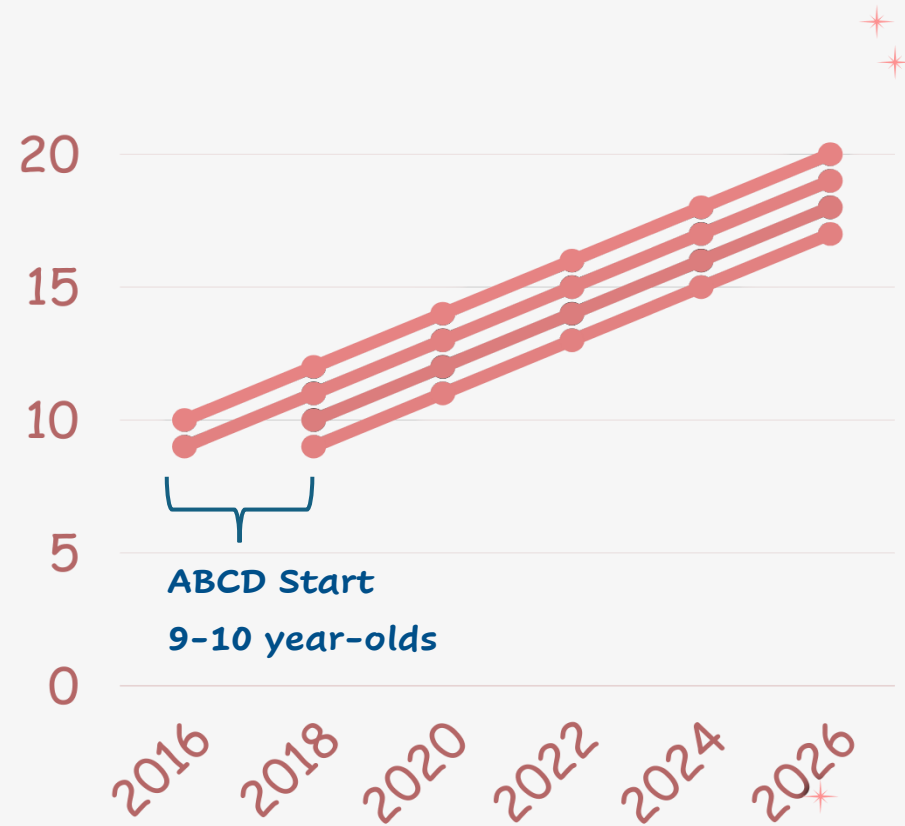
Marybel R Gonzalez, PhD

The Ohio State University

Department of Psychiatry and Behavioral Health

04/02/2024

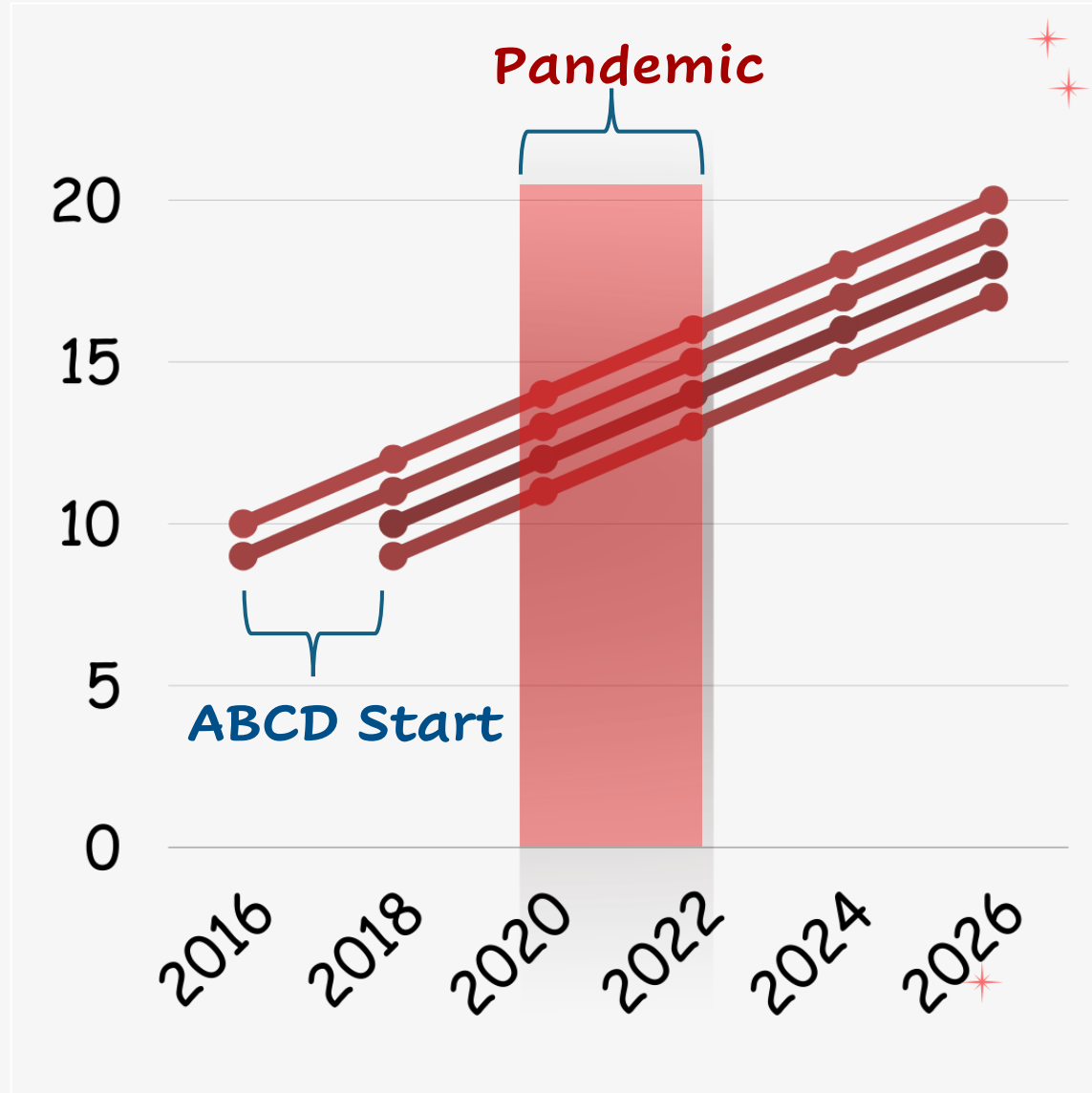
ABCD Study



***Follow 11,880 Youth over
10 YEARS***

***“The ABCD Study is
the largest long-term
study of brain
development and
child health in the
United States”***

ABCD Study Timeline



nature

[Explore content](#) [About the journal](#) [Publish with us](#) [Subscribe](#)

[nature](#) > [career feature](#) > article

CAREER FEATURE | 02 August 2021

Pandemic upheaval offers a huge natural experiment

The disruption that the coronavirus has caused to daily life has created unique research opportunities for scientists.

By [Julia Rosen](#)

ABCD Study Rapid Response

During COVID-19 Pandemic

X Paused In-Person Visits

✓ COVID-19 Online Surveys ~2 months

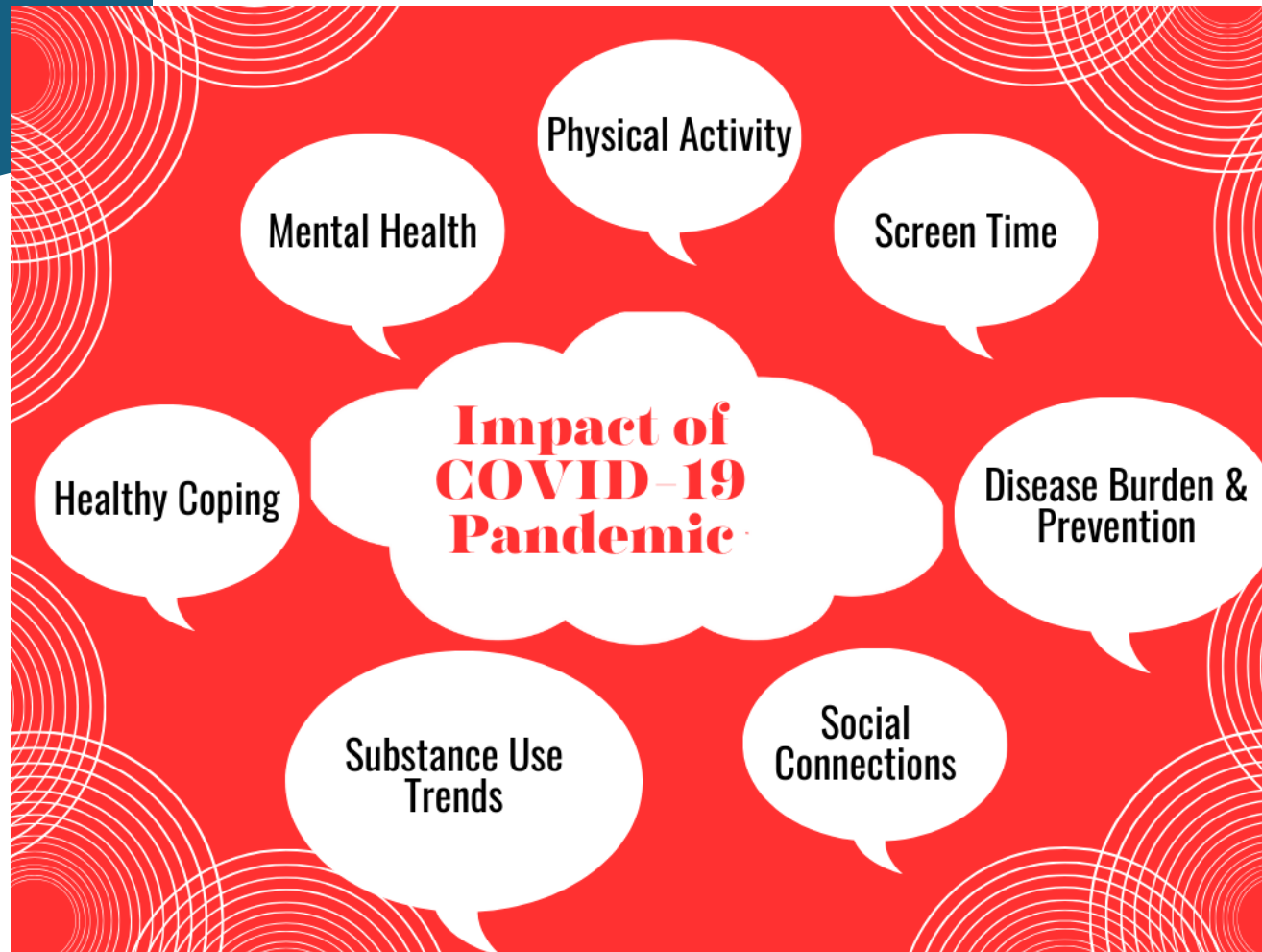


✓ Annual Remote Visits



✓ Annual Hybrid sessions (in-person + remote)

ABCD STUDY
used in
30 Publications
in Scientific
Journals



FAMILY WELL-BEING During Pandemic

Measured as:

Parent Report

- ☐ Family Stress-Discord (short-tempered, irritable, shouting, or throwing things)

Youth Report

- ☐ **Quality** of Family Relationships (worse or better)
- ☐ Participated in **Family Activities**
- ☐ More or less **communication** with family
- ☐ **Tone** of communication with family (negative or positive)





FAMILY WELL-BEING

During Pandemic

WORSE IF BEFORE PANDEMIC HAD...



**HISTORY OF PARENT
ANXIETY/DEPRESSION**



FINANCIAL HARDSHIP



FAMILY WELL-BEING

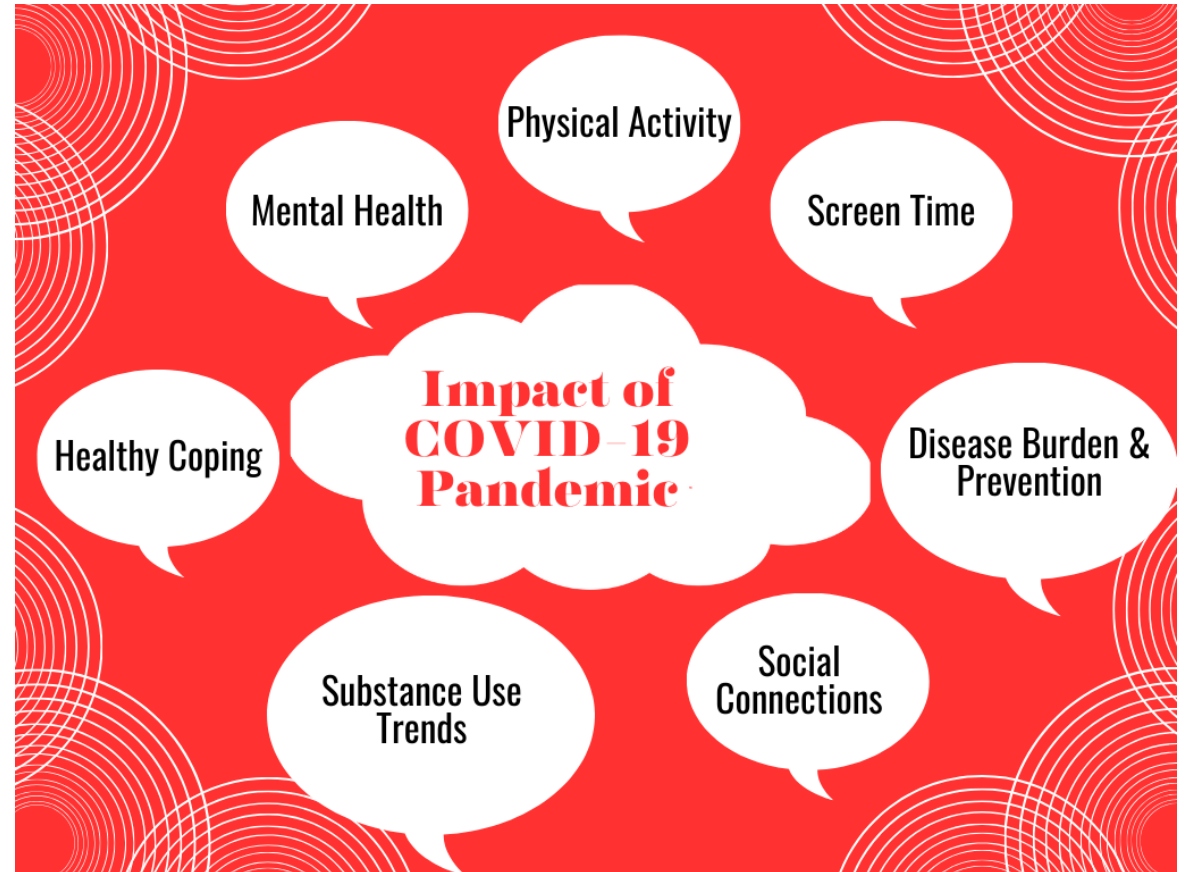
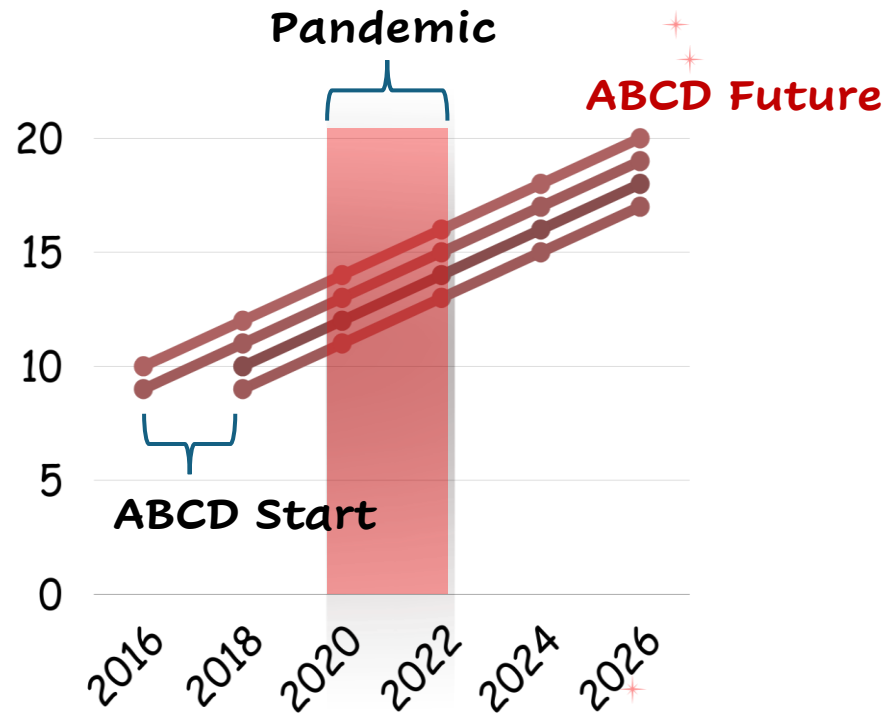
During Pandemic

BETTER IF DURING THE PANDEMIC HAD...

- ✓ **LESS FINANCIAL HARDSHIP**
 - ✓ **LESS DISRUPTIONS TO
ROUTINES AT WORK & HOME**
 - ✓ **MORE CONTACT WITH
FRIENDS & FAMILY**
 - ✓ **LESS PARENTAL ALCOHOL USE**
 - ✓ **MORE HEALTHY
ACTIVITIES**
- Exercise
Hobbies
Eat Healthy
Good Sleep

Scientists will Study

- ✓ Long-term Impact
- ✓ Risk & Resilience





Thank You

ABCD COVID-19 Rapid Response Task Force

Dr. Susan Tapert, UCSD



Suhaani Gupta, UCSD

ABCD Families