

# ABCD Youth Protocol Summary: Six-year Follow-up

## Physical Health

PhenX Anthropometrics (height/weight/waist measurements)  
Blood Pressure  
Snellen Vision Screen  
Youth Risk Behavior Survey - Exercise  
Pain Questionnaire  
Munich ChronoType Questionnaire (sleep)  
Respiratory Functioning  
COVID-19 Annual Form  
Pubertal Development Scale and Menstrual Cycle Survey  
Block Kids Food Screener  
Medications

## Biospecimens

Breathalyzer (alcohol screen - subset of participants)  
Hair (substance use metabolites)  
Blood (A1C, cholesterol, CBC, anemia, genetic factors)  
Oral Fluids (pubertal hormones; drug screen)  
Urine (drug screen; Reditest Smoke Cassette)  
Baby Teeth (substance and environmental toxin exposure)

## Neurocognition

### NIH Toolbox Tasks:

- Picture Vocabulary
- Flanker Inhibitory Control & Attention
- List Sorting Working Memory
- Dimensional Change Card Sort
- Pattern Comparison Processing Speed
- Picture Sequence Memory Form B
- Oral Reading Recognition
- Rey Auditory Verbal Learning Test-Long Delay
- Little Man Task
- Rey Auditory Verbal Learning Test-Long Delay

## Mental Health

### Kiddie Schedule for Affective Disorders and Schizophrenia (KSADS-5)

- Background Items Survey
- Diagnostic Interview for DSM-5 (Mood Disorders, Panic Disorder, Social Anxiety Disorder, Generalized Anxiety Disorder, Obsessive Compulsive Disorder, Eating Disorder, Conduct Disorder, Sleep, Post-Traumatic Stress Disorder, and Suicidality)

UPPS – P for Children - Short Form (ABCD version)

PhenX Behavioral Inhibition/Behavioral Approach System (BIS/BAS) Scales

Prodromal Psychosis Scale

Youth Resilience Scale

Youth Self Report

Peer Experiences Questionnaire

Cyberbullying Questionnaire

Life Events Scale

Gender Identity Questionnaire

## Substance Use\*

Participant Last Use Survey (PLUS) for substance use within the last 24 hrs

PhenX Community Risk and Protective Factors

PhenX Peer Group Deviance Survey Sibling Use

PATH Intention to Use Tobacco Survey

Opportunity to Use Questionnaire

PhenX Perceived Harm of Substance Use

Alcohol Expectancies Questionnaire

Adolescent Smoking Consequences Questionnaire (Expectancies)

Marijuana Effect Expectancy Questionnaire

Caffeine Intake Survey

## Culture & Environment

Parental Monitoring Survey

Activity Space

Acceptance Subscale from Children's Report of Parental Behavior Inventory (CRPBI) - Short

PhenX School Risk & Protective Factors

Peer Behavior Profile: Prosocial Peer Involvement & Delinquent Peer Involvement

Peer Network Health: Protective Scale

Resistance to Peer Influence Scale

Perceived Discrimination Scale

Mexican American Cultural Values Scale

School Attendance of Youth & Grades

Prosocial Behavior Survey

PhenX Family Environment Scale – Family Conflict

Multi-Group Ethnic Identity - Revised

Native American Acculturation Survey (if applicable)

Multidimensional Neglectful Behavior Scale

## Brain Imaging

### Structural MRI

- 3D T1 - Weighted
- 3D T2 - Weighted
- Diffusion Tensor Imaging

### Functional MRI (fMRI)

- Resting State
- Monetary Incentive Delay Task
- Stop Signal Task
- Emotional N-Back Task

## Mobile Technology & Other Data Sources

Fitbit Pre and Post Assessments (sleep, health, activity)

Screen Time Survey

[ABCDStudy.org](http://ABCDStudy.org)

\* For participants with differing levels of substance use (low, moderate, heavy), follow-up items include: Timeline Follow-back Survey; ISay II Q2 Sipping Items (sip); Tobacco Low-Level Use (puff); Marijuana Low-Level Use (puff/taste); PhenX Acute Subjective Response to Alcohol, Tobacco, or Marijuana; Hangover Symptom Scale; Rutgers Alcohol Problem Index (RAPI); Nicotine Dependence (PATH); Drug Problem Index (DAPI); Marijuana Problem Index (MAPI); Cannabis Withdrawal Scale; Drinking Motives Questionnaire; Marijuana Motives Questionnaire; Tobacco Motives Inventory; Electronic Nicotine Delivery Systems Motives Inventory; Reasons for Electronic Nicotine Delivery Systems Use; Vaping Motives.

# ABCD Parent Protocol Summary: Six-year Follow-up

## Physical Health

Pubertal Development Scale and Menstrual Cycle Survey  
Block Kids Food Screener  
PhenX Demographics Survey  
Medical History Questionnaire  
PhenX Medications Survey  
Sleep Disturbances Scale for Children  
Ohio State TBI Screen-Short

## Substance Use

Participant Last Use Survey (PLUS) for substance use within the last 24 hrs.  
Parent Rules  
PhenX Community Risk and Protective Factors  
Household Substance Use, Density, Storage & Second-Hand Exposure

## NeuroCognition

Barkley Deficits in Executive Functioning Scale - Short

## Mental Health

### Kiddie Schedule for Affective Disorders and Schizophrenia

- Background Items Survey
- Diagnostic Interview for DSM-5 (all modules except Enuresis & Encopresis, and Selective Mutism)

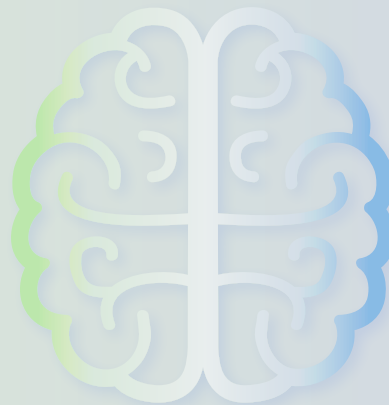
Life Events Scale  
Gender Identity Questionnaire  
Child Behavior Checklist  
Difficulty in Emotion Regulation Scale  
Family History  
General Behavior Inventory - Mania  
Perceived Stress Scale

## Culture & Environment

Mexican American Cultural Values Scale  
School Attendance of Youth & Grades  
Prosocial Behavior Survey  
PhenX Family Environment Scale – Family Conflict  
Vancouver Index of Acculturation  
Multi-Group Ethnic Identity  
Community Cohesion and Informal Social Control Subscales of the Project on Human Development in Chicago Neighborhoods  
Driving

## Mobile Technology & Other Data Sources

Geocoding from residential history  
School Records



**Adolescent Brain Cognitive Development**®

*Teen Brains. Today's Science. Brighter Future.*

**ABCDStudy.org**