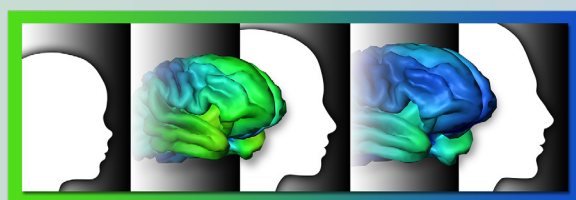


# ABCD Mid-year Follow-up Protocol Summary

ABCD Follow-up Measure	What it measures:	Youth (min)	Parent (min)
Introduction			4
Brief Problem Monitor Scale	Dimensional psychopathology, adaptive functioning in past week	3	
Yes/No Substance Use Questions	Past 6-month heard-of or use of substances	3-7	
NIH Toolbox Positive Affect Short Form	Positive emotions and affective well-being in past week	1	
Mid Year Phone Interview Closing Questions		2	
<b>Total Minutes</b>		<b>9-13</b>	<b>4</b>



**Adolescent Brain Cognitive Development®**  
*Teen Brains. Today's Science. Brighter Future.*

[ABCDStudy.org](http://ABCDStudy.org)